

# Assembly Instruction Sheet #IS-1065P28-15

## For Style 1065P28-15

**Tools Required:** Flathead screwdriver, Phillips screwdriver, pliers, wire cutters, wire strippers, electrical tape, safety glasses.

**Light Source:** (15) E12 Candelabra Base Bulbs 60W Maximum.

**Estimated Assembly Time:** 20-30 minutes

**Preparation:** Identify and inspect all parts before beginning installation. Check package content list and diagrams below to be sure all parts are present. If any parts are missing or damaged, do not attempt to assemble, install, or operate the fixture. Contact customer service for replacement parts.

### ⚠ Warnings and Cautions

Turn off electricity at circuit breaker or main fuse box before installation. Consult a licensed electrician if in doubt.

These instructions are provided for your safety. It is very important you read them completely before installing the fixture.

We strongly recommend that a licensed, professional electrician perform the installation.

Disconnect fixture from power source before replacing bulbs. Make sure bulbs are given sufficient time to cool before removal.

### STEP 1 - Install Frame body and Driver pipe to Fixture Body.

A. Fix the 4" Rod(H) with Fixture Body(A) with screws. Line up the Bottom Frame body(E) and the holes on the 4" Rod(H). Use the screws to fix them together. Use the same way to fix the Top Frame Body(E) and the 7" Rod(F).

B. Thread the power cord through the Nibble(G) to fix with Fixture body(A). Set the Driver pipe(D) into Nibble(G). Put the Socket sleeve(C), then fix them with the loop.

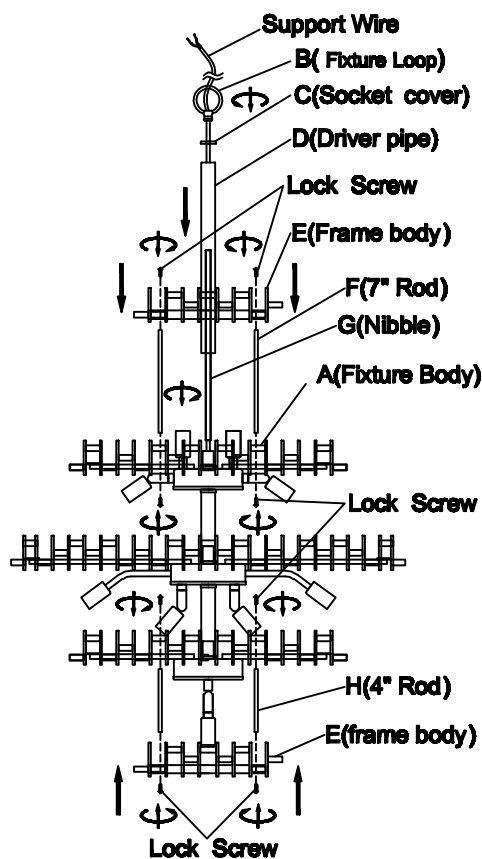


Figure 1

### STEP 2 - Install the Crossbar to the Ceiling

A. Attach the round crossbar to the outlet box and secure the outlet box screws by hand tighten. Place the crossbar with hook to the ceiling and make (4) marks from the holes of the crossbar on the ceiling for anchors. Remove the crossbar and drill proper holes from the (4) marks for anchors. Insert anchors into drilled holes properly. Place crossbar, flat washers and spring washers onto the anchors and secure with hex nuts. Hand tighten until snug with plier.

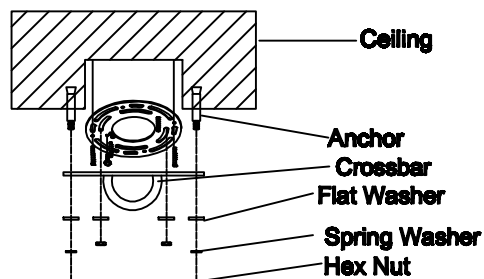


Figure 2

### STEP 3 - Install Chain System and Fixture Body together

A. Remove the bolt from the quick connector. Place the quick connector onto the chain link of the bottom end of chain system. Place the fixture loop inside the quick connector. Thread the bolt back to the quick connector and the fixture loop. Hand tighten until snug to connect the chain system to the fixture.

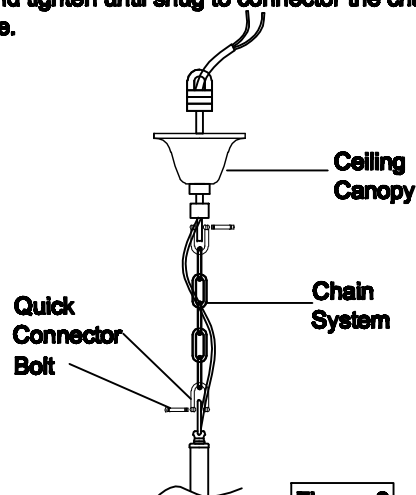


Figure 3