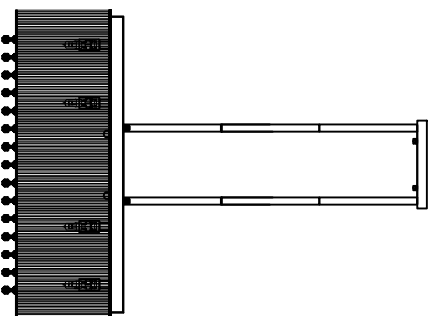


Trade Mark:
CRYSTAL WORLD INC

Product Name: Pendant lamp
Model :5320P26C-S
120Vac, 60Hz, AC ONLY
Lampsize:L26"*W26"*H21""~68"

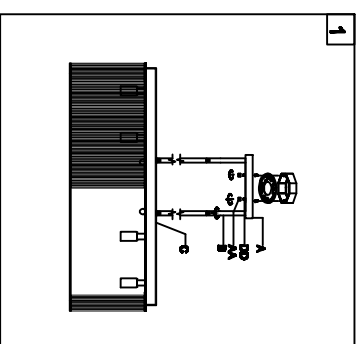


PENDANT LAMP ASSEMBLY INSTRUCTIONS

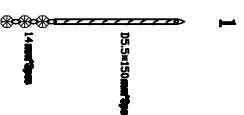
1. Screw (B) onto the lampbody (C) ,
Screw (B) onto the (A) secure with screw.
Place fixture (A) onto mounting screws (DD),
secure with cap nuts (AA).

Hardware Used

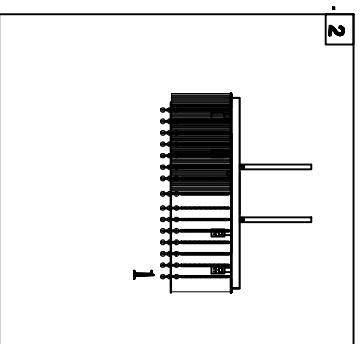
AA Cap nut		X 2
DD Mounting screw		X 2



2. Please put the crystal (1) to the fixture



249PCS



3. Install light bulbs (not included).
Use Bulb
120V G9 ⌀ 12*40W Max.

